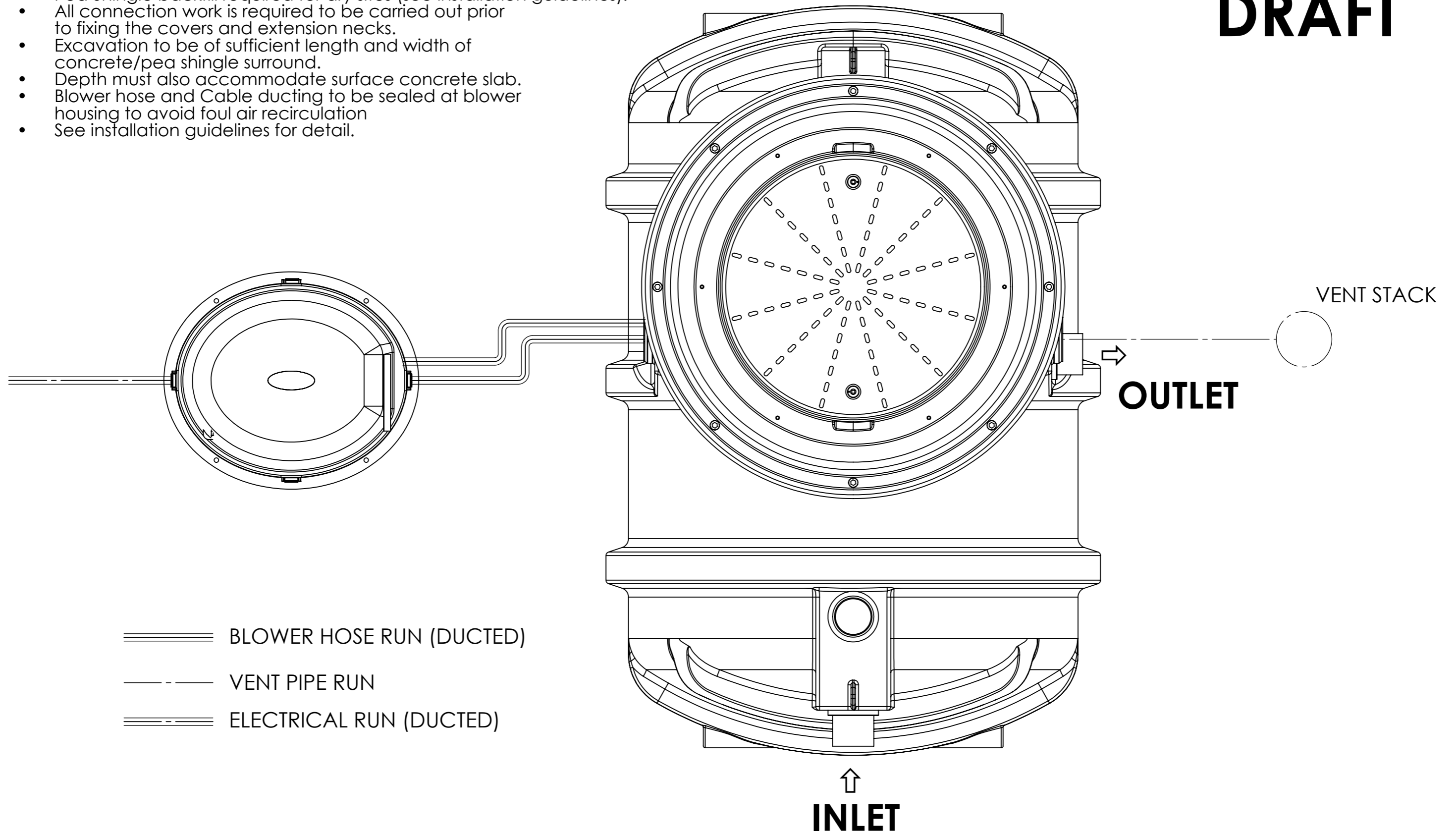


Notes:

- Inlet & outlet pipes are $\phi 110\text{mm}$.
- Concrete backfill required for wet sites (see installation guidelines).
- Pea Shingle backfill required for dry sites (see installation guidelines).
- All connection work is required to be carried out prior to fixing the covers and extension necks.
- Excavation to be of sufficient length and width of concrete/pea shingle surround.
- Depth must also accommodate surface concrete slab.
- Blower hose and Cable ducting to be sealed at blower housing to avoid foul air recirculation
- See installation guidelines for detail.

DRAFT

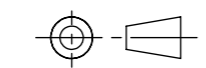


Please Check with Environmental Treatment Systems Limited For The Latest Issue Of This Drawing				
Issue	Date	Drawn by	Approved by	Description
01	07/01/13	S.Gill		Initial Issue

Material : PE
 Finish :
 Weight :
 Modelled By : Sean Gill

Tolerance (unless stated) :
 Thickness :
 Surface Area : m²

Drawing : DS1215 Page 1 of 1
 BIOPURA Blower, Vent & Elec

All Dimensions In mm Scale: Do Not Scale

 Third Angle Projection

 Y:\engineering\Engineering Projects\914G - BIOPURA 4\DS1215

Kingspan Environmental reserve the right to alter the details of this drawing without prior notice. This drawing is copyright and may not be reproduced or used without the written permission of Kingspan Environmental

